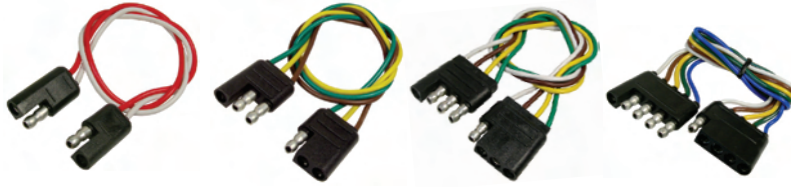


Trailer Connectors



#1871 or #0710 #1872 or #0711 #1873 or #0712 #0718

Prewired Molded Trailer Connectors - Male & Female
12" 16 Gauge Wire Loop - Polarized & Color Coded

Description	Part #	Qty	Part #	Qty	Part #	Qty	Part #	Qty	Part #	Qty
2-Way	1871A	50	1871C	1	1871L Card of 9	0710P	1	0710PT	1	
3-Way	1872A	50	1872C	1	1872L Card of 9	0711P	1	0711PT	1	
4-Way	1873A	50	1873C	1	1873L Card of 9	0712P	1	0712PT	1	
5-Way	0718A	25	—	—	—	0718P	1	0718PT	1	



CARDED

#1871, #1872 & #1873
Available on Cards
9 "C" packs per Card
To order add suffix "L"



#0714
Female End



#0713
Male End

Molded 4-Way Single End Only
6" 16 Gauge Wire Lead

Description	Part #	Part #	Qty
4-Way Male	0713P	0713PT	1
4-Way Female	0714P	0714PT	1



Molded 2-Way
10 Gauge Wire Lead

Part #	Qty
1878A	50
1878C	1
1878PT	1



#0715

#0716

#0717

Shrouded Moisture Proof
Male/Female Connector Sets
Polarized Plugs
12" 18 Gauge Color Coded Wire

Description	Part #	Part #	Qty
4-Way Flat	0715P	0715PT	1
5-Way Square	0716P	0716PT	1
6-Way Square	0717P	0717PT	1

DUST CAPS



#0703C (#0703PT)
Caps For 4-Way Flat
Trailer Connectors
Caps Attach To Connector
To Prevent Loss

4-POLE CONNECTOR



#0720P (#0720PT)

Round 4-Pole
Trailer Connector
Polarized Plug

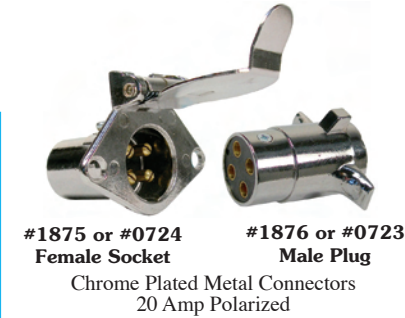
4-POLE CONNECTORS



#0705P
(#0705PT)
Female Socket

#0704P
(#0704PT)
Male Plug

Heavy Duty Die Cast Metal Connectors
Polarized - Dust & Water Resistant
12-24 Volts 35 Amp



#1875 or #0724
Female Socket

#1876 or #0723
Male Plug

Chrome Plated Metal Connectors
20 Amp Polarized

Socket		Plug		Socket & Plug	
Part #	Qty	Part #	Qty	Part #	Qty
1875A	50	1876A	50	1877C	1 ea
1875C	1	1876C	1	0725P	1 ea
0724P	1	0723P	1	0725PT	1 ea
0724PT	1	0723PT	1		

6-POLE CONNECTORS



#0727P
(#0727PT)
Male Plug

#0728P (#0728PT)
Plastic
Female Socket

#0729P (#0729PT)
Metal
Female Socket

Chrome Plated Die Cast Metal Plug
Plastic Socket - Molded Unit With Boot
Metal Socket - Die Cast
Sockets Have Spring Loaded Cover - 35 Amp

7-POLE CONNECTORS



#0707P (#0707PT)
Female Socket

#0706P (#0706PT)
Male Plug

Molded Plastic 7-Way RV Blade



#0709P (#0709PT)
Female Socket

#0708P (#0708PT)
Male Plug & Spring

7-Way - 40 Amp - Die Cast Metal
Plug Has Cable Guard Spring
Socket Has Split Pin Design With Locking Cover



#0721P (#0721PT)
Female Socket

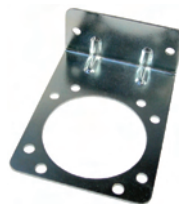
#0722P (#0722PT)
Male Plug

7-Way RV Blade
Die Cast Metal - 40 Amp

Trailer Connector Brackets



#0700C (#0700PT)
Plated Metal Bracket
4 & 6 Pole Connectors



#0701C (#0701PT)
Plated Metal Bracket
7-Pole RV Connectors



#0702C (#0702PT)
Plated Metal Bracket
7-Pole Connectors

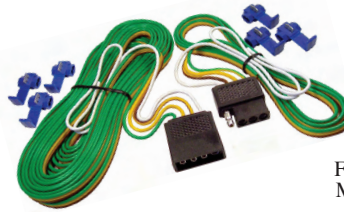
All Items with QT, KT, GT or PT Suffix are Clam Shell Program Items.

Trailer Connector Kits



#0733P (#0733PT)

4-Way 5' Wiring Kit
Female 48" Lead Wire - Male 12"
Polarized Plug - Color Coded Wire
Includes 3 Splice Connectors.



#0735P (#0735PT)

4-Way 24' Trailer Wiring Kit
Molded Plastic Polarized Plugs
Color Coded Wire
Female - 3 4' Leads & 1 18" Lead (ground)
Male - 3 20' Leads & 1 18" Lead (ground)
Includes 6 Splice Connectors

4-POLE CONNECTOR



#0740P (#0740PT)

Die Cast Chrome Plated Metal
4-Pole Male & Female Connectors
Mounting Bracket & Hardware
18 ga Color Coded Wire
3 Splice Connectors

6-POLE CONNECTOR



#0742P (#0742PT)

RV Replacement Kit
Die Cast Chrome Plated Metal Plug
Molded Plastic Socket & Boot
6-Pole Male & Female Connectors
Mounting Bracket & Hardware
18 ga Color Coded Wire
5 Splice Connectors

Litemate® Electronic Brake Controls

For 2, 4 and 6 Brake Systems

Mount At Any Angle With Included Bracket - Use With Brake Control Adapters or Can Be Hardwired to Vehicle

New Design



#6510PT

LED Power Light Display
Orange LED Changes In Intensity as Power Setting is Increased
Protects Vehicle from Trailer Brake Shorts
Includes Manual Override

New Design



#6511PT

Digital LED Light Display
Digital Readout, Numerical from 5 to 99%
Set Exact Percentage of Power Needed
Trailer Brake Failure Notification
Includes Manual Override

Litemate® Electronic Brake Control Adapters



Make Electronic Brake Control Installation Easy With Adapters!!

- Locate Vehicle Connector (Under Dash)

- Plug in Correct Adapter

- Plug Adapter into Brake Control



#6516PT

FORD ADAPTER

F-150 Pickup	1994-08
F-250/350 Pickup	1994-06
Expedition	1997-10
Excursion	2002-05
Explorer	2002-10
Mountaineer	2000-10
Van (Full Size)	2003-08
Windstar	1995-03
Navigator	1998-10
LR3 / Range Rover	2005-10
Range Rover	2005-10
Lincoln Mark LT	2007-08
MKT	2010



#6517PT

DODGE ADAPTER

(with tow package)

Ram Pickup	1995-09
Dakota	1997-10
Durango	1998-08
Aspen	2007-09
Grand Cherokee	2001



#6518PT

CHEV / GMC / CADILLAC

(with tow package)

Avalanche	2002-06
Silverado	1999-06
Sierra	1999-06
Suburban	2000-06
Tahoe	2000-06
Yukon	2000-06
Denali	2000-06
Escalade	2000-06
H2 Hummer	2003-07
H2 SUT Hummer	2000-07



#6519PT

FORD ADAPTER

F-250/F-350 Pickup	2005-10
F-450/F-550 Pickup	2005-10



#6521PT

NISSAN ADAPTER

Armada	2004-10
Titan	2004-10
Frontier	2004-10
Pathfinder	2004-10
Xterra	2004-08
QX-56	2004-10

All Items with QT, KT, GT or PT Suffix are Clam Shell Program Items.