

Tie Wrap

One Piece Self-Locking Nylon Tie Wrap - No Metal Barbs - Curved Tip
Black Ties Are UV (Ultraviolet) Resistant Black Nylon



STANDARD TIE WRAP

Length	Strength	Part #	Qty	Part #	Qty	Part #	Qty
4"	18 lbs	7064A	1000	7064C	25	7064PT	25
4"	18 lbs	7064E	100	7064H	30	7064KT	30
4"	18 lbs	7064ET	100	7064D	17	—	—
4"	18 lbs	—	—	7064M	6	7064QT	6
5-1/2"	30 lbs	7065A	1000	7065C	25	7065PT	25
5-1/2"	30 lbs	7065E	100	7065D	12	7065KT	20
5-1/2"	30 lbs	7065ET	100	7065M	4	7065QT	4
7"	50 lbs	7066A	1000	7066C	25	7066PT	25
7"	50 lbs	7066E	100	7066H	20	7066KT	20
7"	50 lbs	7066ET	100	7066D	11	—	—
7"	50 lbs	—	—	7066M	4	7066QT	4
11-1/2"	50 lbs	7067A	500	7067C	25	7067PT	25
11-1/2"	50 lbs	7067E	100	7067D	6	7067KT	10
11-1/2"	50 lbs	7067ET	100	7067M	2	7067QT	2
14-1/2"	50 lbs	7068A	500	7068C	25	7068PT	25
14-1/2"	50 lbs	7068E	50	7068D	5	7068KT	10
14-1/2"	50 lbs	7068ET	50	7068M	2	7068QT	2



BLACK TIE WRAP

Length	Strength	Part #	Qty	Part #	Qty	Part #	Qty
4"	18 lbs	7074A	1000	7074C	25	7074PT	25
4"	18 lbs	7074E	100	7074D	18	7074KT	20
4"	18 lbs	7074ET	100	7074M	7	7074QT	7
5-1/2"	30 lbs	7075A	1000	7075C	25	7075PT	25
5-1/2"	30 lbs	7075E	100	7075D	13	7075KT	20
5-1/2"	30 lbs	7075ET	100	7075M	5	7075QT	5
7"	50 lbs	7076A	1000	7076C	25	7076PT	25
7"	50 lbs	7076E	100	7076D	12	7076KT	20
7"	50 lbs	7076ET	100	7076M	5	7076QT	5
11"	50 lbs	7077A	500	7077C	25	7077PT	25
11"	50 lbs	7077E	100	7077D	7	7077KT	10
11"	50 lbs	7077ET	100	7077M	3	7077QT	3
14"	50 lbs	7078A	500	7078C	25	7078PT	25
14"	50 lbs	7078E	50	7078D	6	7078KT	10
14"	50 lbs	7078ET	50	7078M	3	7078QT	3
8" H.D.	120 lbs	7104A	100	7104C	25	7104PT	25
14" H.D.	120 lbs	7079A	100	7079C	25	7079PT	25
18" H.D.	120 lbs	7108A	50	7108C	10	7108PT	10
24" H.D.	175 lbs	7105A	50	7105C	5	7105PT	5
34" H.D.	175 lbs	7106A	50	7106C	5	7106PT	5
48" H.D.	175 lbs	7107A	50	7107C	5	7107PT	5

Tie Wrap Tool
#0695T
Page 15



COLORED TIE WRAP

Length	Strength	Color	Part #	Qty	Part #	Qty	Part #	Qty
7"	50 lbs	Red	7090A	1000	7090C	25	7090PT	25
7"	50 lbs	Green	7091A	1000	7091C	25	7091PT	25
7"	50 lbs	Yellow	7092A	1000	7092C	25	7092PT	25
7"	50 lbs	Blue	7093A	1000	7093C	25	7093PT	25
7"	50 lbs	Orange	7094A	1000	7094C	25	7094PT	25
11"	50 lbs	Red	7109A	500	7109C	25	7109PT	25
11"	50 lbs	Yellow	7111A	500	7111C	25	7111PT	25
11"	50 lbs	Blue	7112A	500	7112C	25	7112PT	25



HEAVY DUTY TIE WRAP

Length	Strength	Color	Part #	Qty	Part #	Qty	Part #	Qty
8"	120 lbs	Natural	7070A	100	7070C	25	7070PT	25
13"	120 lbs	Natural	7069A	100	7069C	25	7069PT	25
18"	120 lbs	Natural	7072A	50	7072C	10	7072PT	10
24"	175 lbs	Natural	7101A	50	7101C	5	7101PT	5
34"	175 lbs	Natural	7102A	50	7102C	5	7102PT	5
48"	175 lbs	Nat/Gray	7103A	50	7103C	5	7103PT	5



MOUNT HOLE TIE WRAP

Length	Strength	Stud	Part #	Qty	Part #	Qty	Part #	Qty
6"	30 lbs	#8	7085A	1000	7085C	25	7085PT	25
6"	30 lbs	#8	7085E	50	7085D	8	7085KT	10
6"	30 lbs	#8	7085ET	50	7085M	2	7085QT	2
7-1/2"	50 lbs	#10	7086A	1000	7086C	25	7086PT	25
7-1/2"	50 lbs	#10	7086E	50	7086D	7	7086KT	10
7-1/2"	50 lbs	#10	7086ET	50	7086M	2	7086QT	2
11"	50 lbs	#10	7087A	500	7087C	25	7087PT	25
11"	50 lbs	#10	7087E	50	7087D	5	7087KT	8
11"	50 lbs	#10	7087ET	50	7087M	2	7087QT	2
14-1/2"	50 lbs	#10	7088A	500	7088C	25	7088PT	25
14-1/2"	50 lbs	#10	7088E	50	7088D	4	7088KT	5
14-1/2"	50 lbs	#10	7088ET	50	7088M	1	7088QT	1
14-1/2"	120 lbs	1/4"	7089A	100	7089C	25	7089PT	25



BLACK RELEASABLE TIE WRAP

Length	Strength	Part #	Qty	Part #	Qty	Part #	Qty
5 1/2"	50 lbs	7080A	500	7080C	25	7080PT	25
7 1/2"	50 lbs	7081A	500	7081C	25	7081PT	25
11"	50 lbs	7082A	500	7082C	25	7082PT	25

ASSORTED STYLES AND SIZES OF TIE WRAP

Part #	Qty
7071C	25
7071H	14
7071PT	25
7071KT	14



BLACK DUAL TIE WITH MOUNT HOLE

Length	Strength	Stud	Part #	Qty	Part #	Qty
12.9"	150 lbs	1/4"	7083A	50	7083C	5
12.9"	150 lbs	1/4"	—	—	7083PT	5
19.2"	150 lbs	1/4"	7084A	50	7084C	3
19.2"	150 lbs	1/4"	—	—	7084PT	3



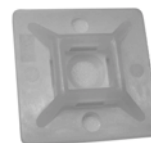
MOUNT HOLE BLACK TIE WRAP

Length	Strength	Stud	Part #	Qty	Part #	Qty	Part #	Qty
6"	30 lbs	#8	7096A	1000	7096E	50	7096ET	50
6"	30 lbs	#8	—	—	7096C	25	7096PT	25
7-1/2"	50 lbs	#10	7097A	1000	7097E	50	7097ET	50
7-1/2"	50 lbs	#10	—	—	7097C	25	7097PT	25
11"	50 lbs	#10	7098A	500	7098E	50	7098ET	50
11"	50 lbs	#10	—	—	7098C	25	7098PT	25
14-1/2"	50 lbs	#10	7099A	500	7099E	50	7099ET	50
14-1/2"	50 lbs	#10	—	—	7099C	25	7099PT	25
14-1/2"	HD120 lbs	1/4"	7100A	100	7100C	25	—	—
14-1/2"	HD120 lbs	1/4"	—	—	7100PT	25	—	—

Wire Tie Mounts



Adhesive Backed Mount
4-Way Insertion
#6 Screw Hole
Holds Up To 50 lb Ties
1-1/8" Square



Part #	Qty
7095A	100
7095C	12
7095D	4
7095PT	12
7095KT	4

All Items with QT, KT or PT Suffix are Clam Shell Program Items.